



MODEL 527 SIPHONIC DUAL FLUSH

TWO-PIECE CLOSED- COUPLE, ELONGATED BOWL,
12" ROUGH IN, GRAVITY FEED
ELONGATED TOILET WITH SECONDARY DRAIN SYSTEM
VITREOUS CHINA

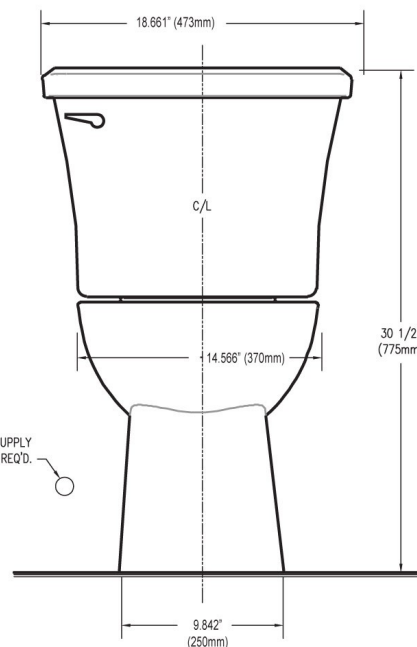
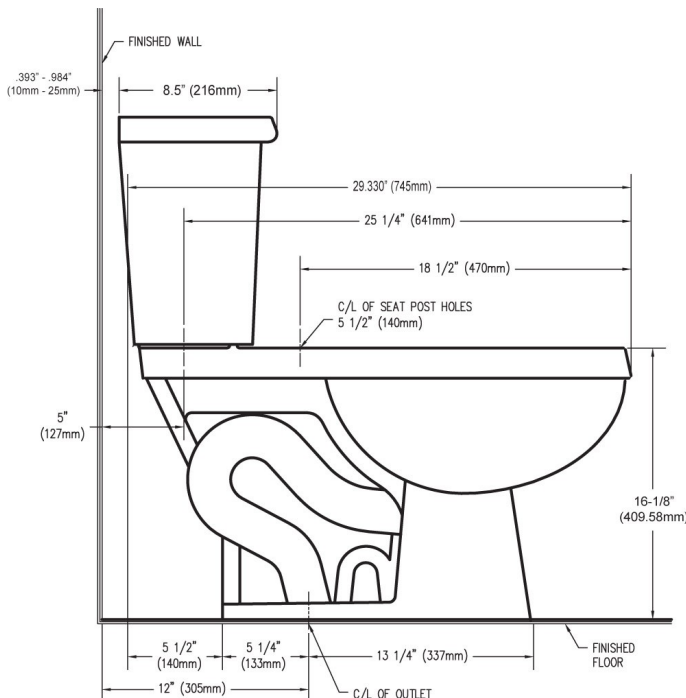
HET- WATER SENSE LISTED
ELONGATED TOILET WITH SECONDARY DRAIN SYSTEM
1.1 GALLON/4.1 LITER PARTIAL FLUSH
1.6 GALLON/6.0 LITER FULL FLUSH

FEATURES:

- Vitreous china
- Exclusive Penguin Protection: secondary drain system that helps protect against toilet overflows
- Drop in replacement for existing toilets with 12" rough-in
- New taller bowl design meets ADA codes with approved seat
- Gravity flushing system
- Elongated bowl
- Comes complete with Fluidmaster siphonic dual flush system
- Left hand trip lever
- Fully grazed trapway

APPLICABLE CODES & STANDARDS:

- ASME A112.19.2
- IGC252-07
- CSA B45-02 (Supplement No. 1-2004)
- IAPMO/cUPC
- IPC
- ADA Compliant



NOTES:

THIS TOILET IS DESIGNED TO ROUGH-IN AT A MINIMUM DIMENSION OF 305MM (12") FROM FINISHED WALL TO C/L OF OUTLET. SUPPLY NOT INCLUDED WITH FIXTURE AND MUST BE ORDERED SEPARATELY.

DIMENSION SHOWN FOR LOCATION OF SUPPLY IS SUGGESTED. FOR ADDITIONAL INFORMATION REFER TO INSTALLATION INSTRUCTIONS SUPPLIED.

28525 Beck Road, Suite 121, Wixom, MI 48393

www.penguintoilets.com

PENGUIN PROTECTION TECHNOLOGY®

